

HD Extender Firmware Updating Guide

AT-HDTX/RX, AT-HDTX/RX-IR, AT-HDTX/RX-RSNET,
AT-HDTX/RX-ROADNET, AT-DVITX/RX-RSNET

New firmware to update, fix, or change functionality of products becomes available occasionally. Atlona has made this as easy as possible for updating on the job by simply downloading from Atlona.com and installing through a mini USB to USB cable.

NOTE: Only use a Windows computer to update. Use of an Apple computer to update will cause the device to be unusable until a Windows computer is used to update.

Needs:

- Current firmware version (downloaded from atlona.com)
- Mini USB to USB cable
- PC (not compatible with MAC)
- OS that supports USB mass storage devices

Step 1: Download the firmware from the firmware tab of the product page on atlona.com

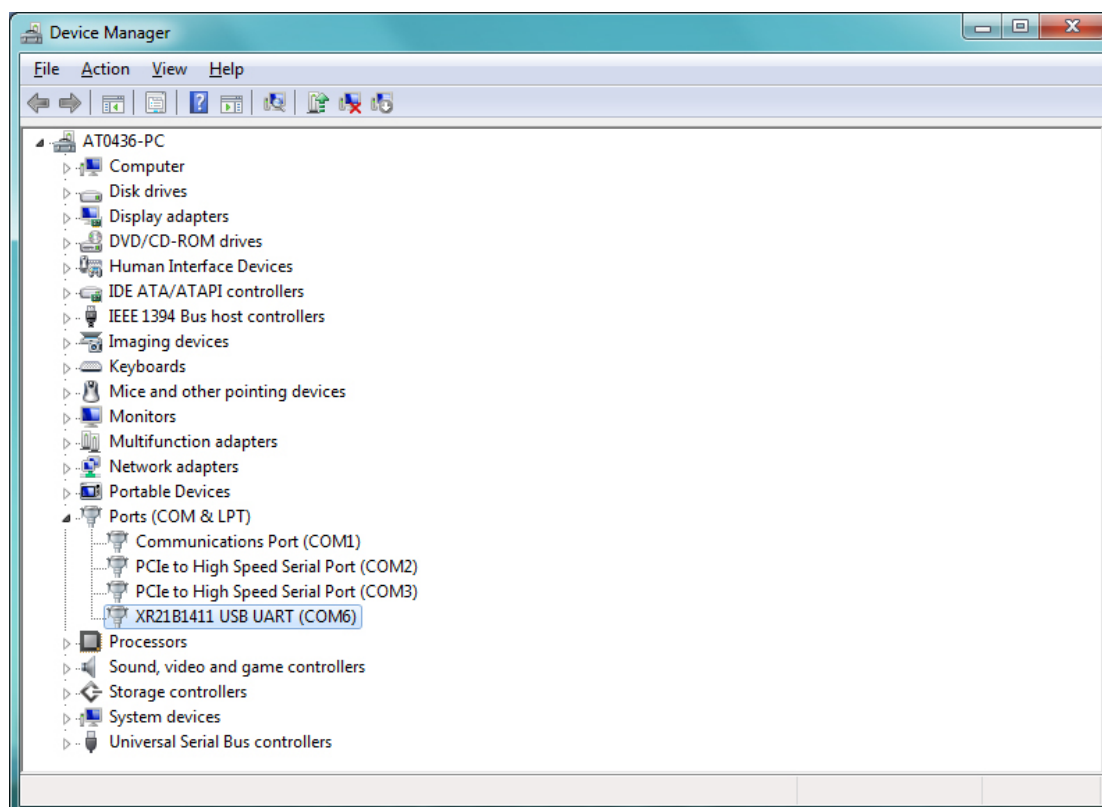
Step 2: Unzip the downloaded files in one spot and keep them there (such as the desktop)

Step 3: Connect the mini USB to USB cable to the transmitter (or receiver) and a PC

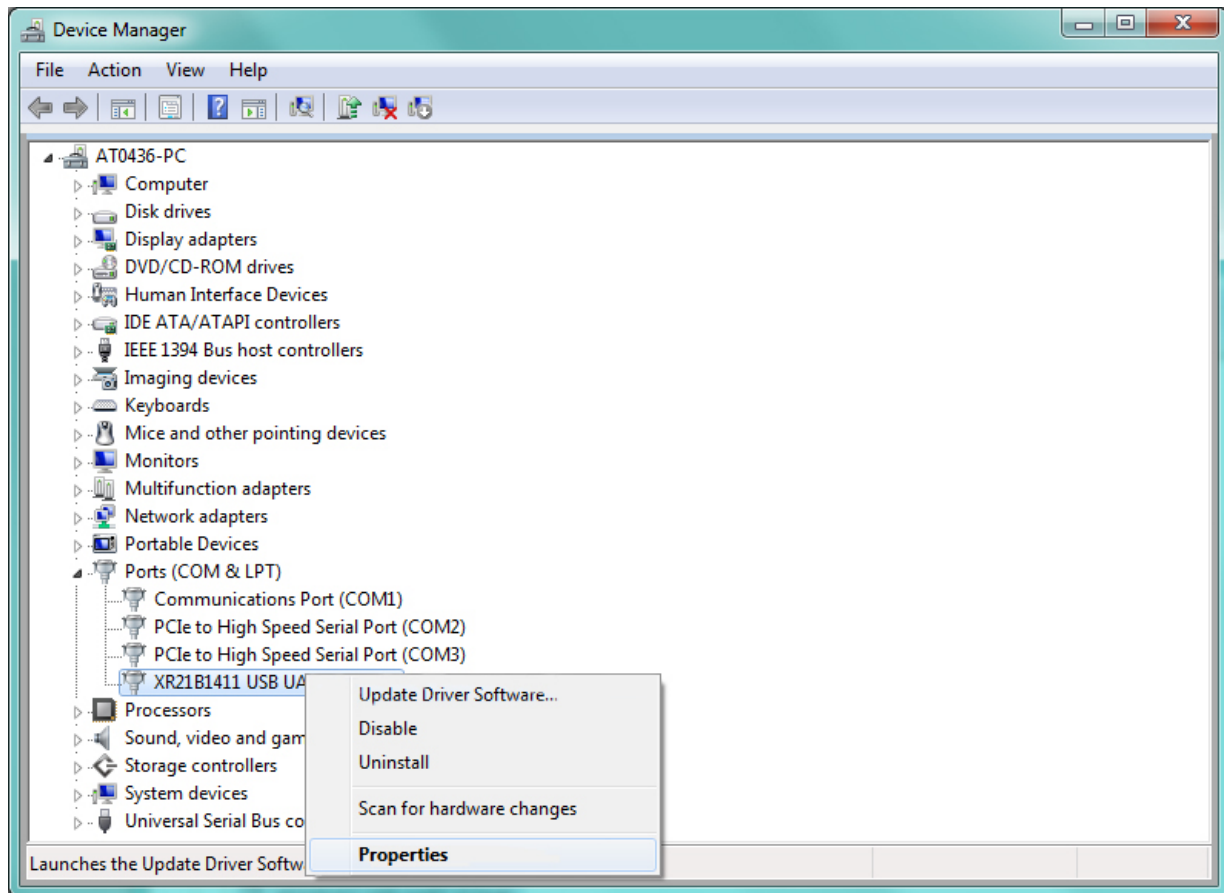
The PC should auto detect the USB device

If not, try unplugging and plugging the cable again

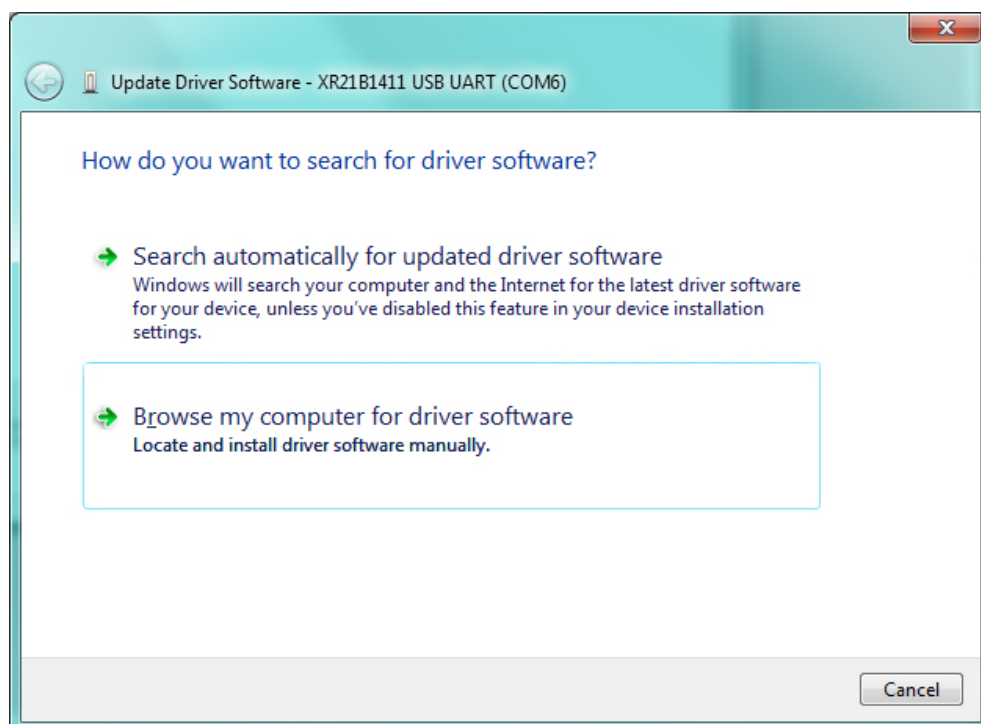
Step 4: Go to the device manager and find the COM port named "XR21XXXXX"



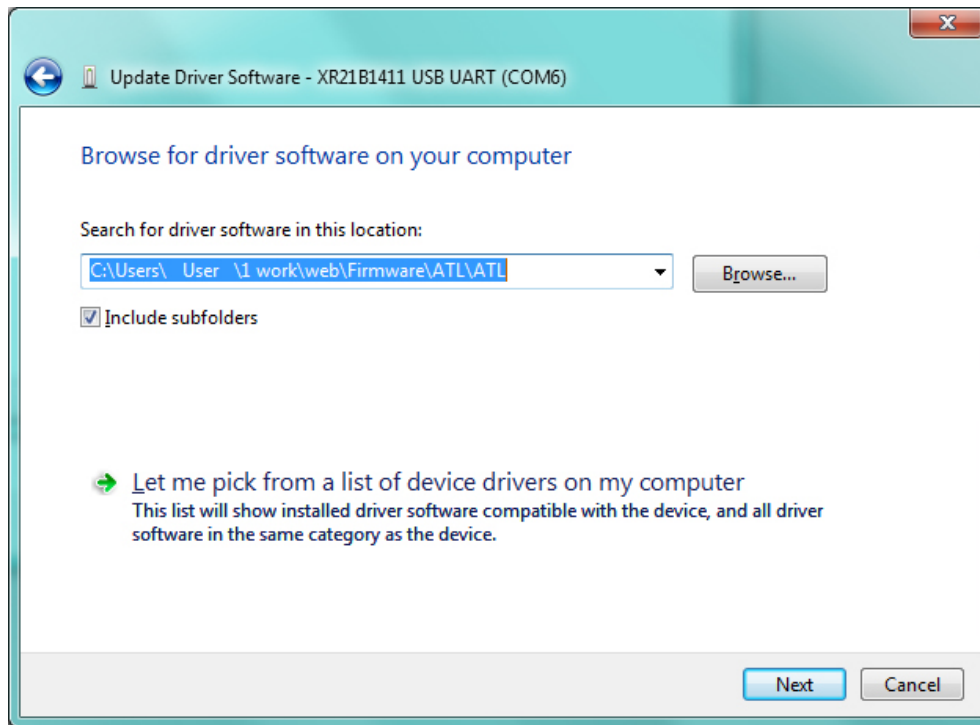
Step 5: Right click and select "Update Driver Software..."



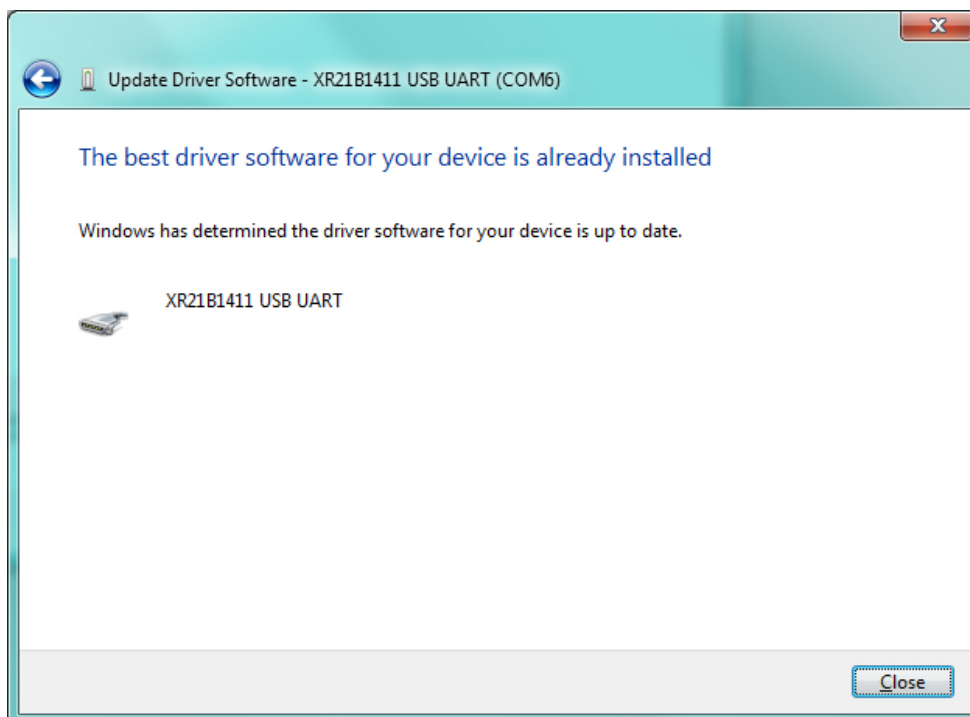
Step 6: Choose option "Browse my computer for driver software."



Step 7: Select “Browse...” and choose the USBUpdate folder that came with the firmware update



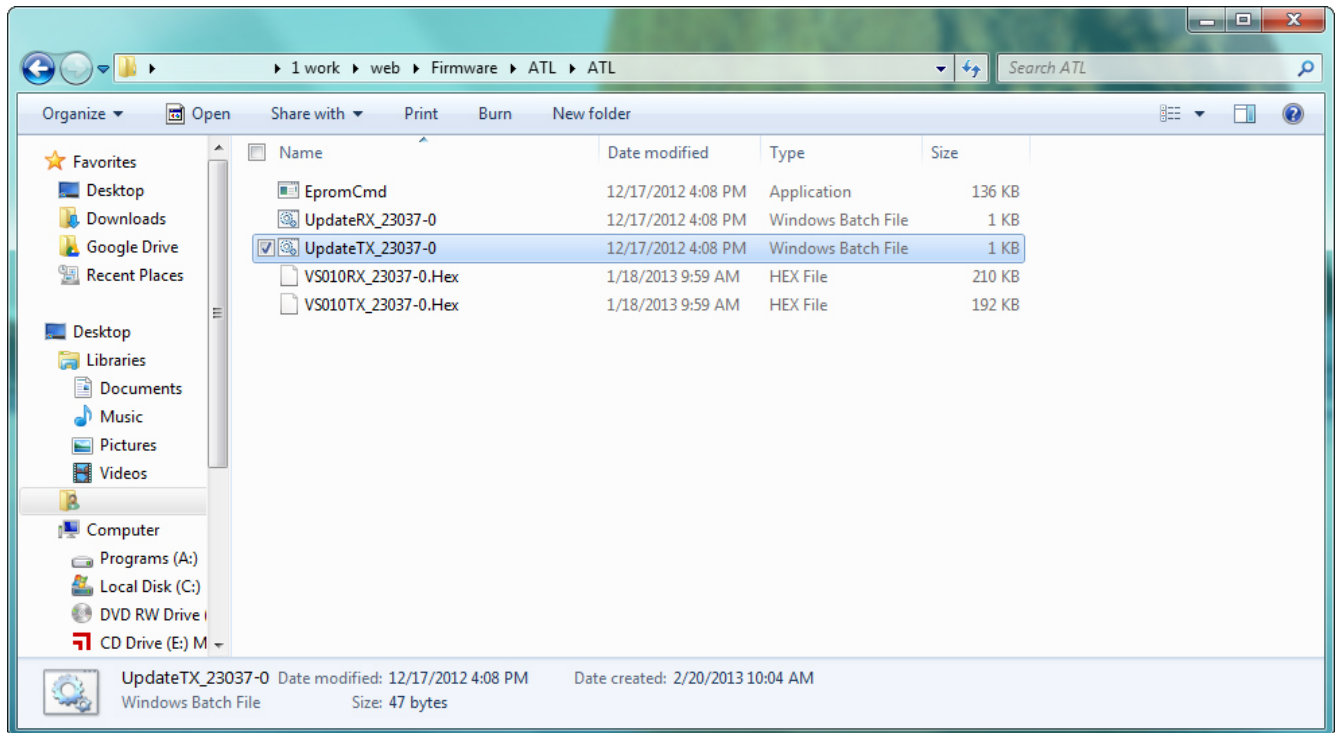
Step 8: Press “Next” to start the driver update
“The best driver software”... message should display when finished



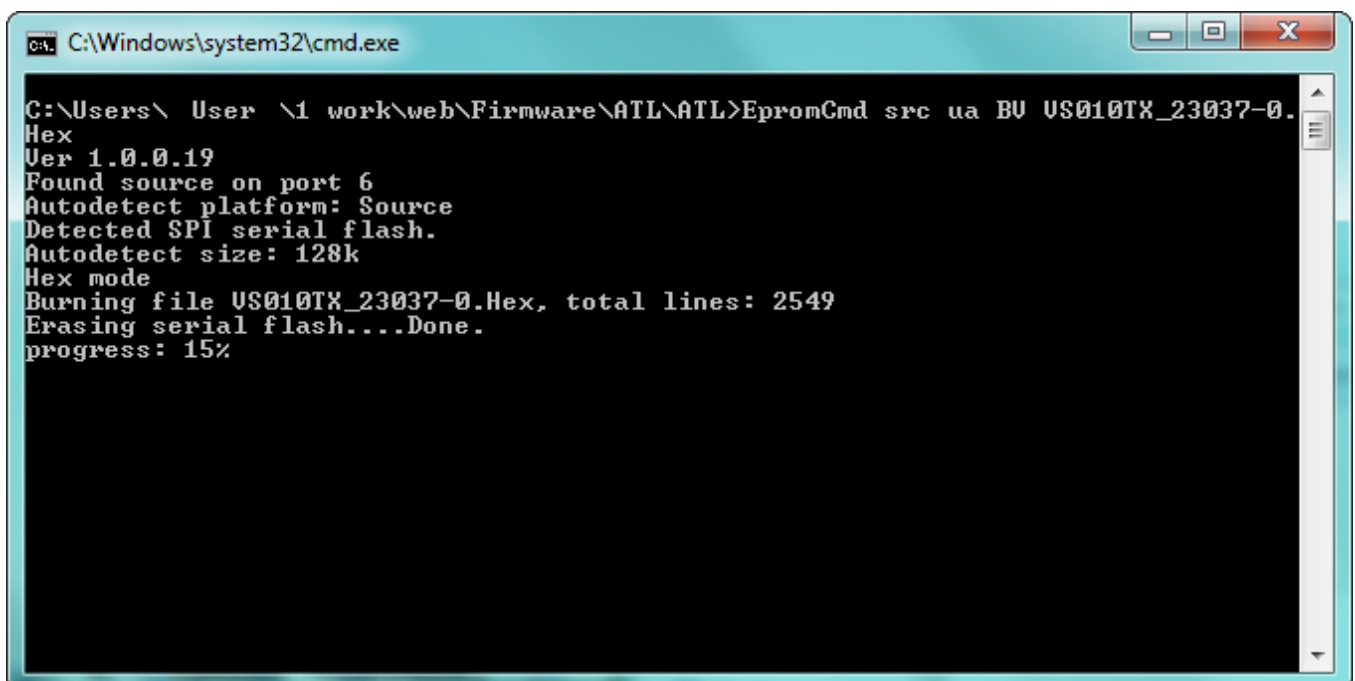
Now that the USB driver is up to date, the transmitter (or receiver) can be updated

Step 9: Open the file called UpdateTX_XXXXX_X (or UpdateRX_XXXXX_X if updating the receiver)

Note: If using a transmitter and receiver, both devices need to be updated



The program will start updating the product automatically -- Process will take aprox. 4 min



Update is complete when file pauses after succeed notice -- press any key to close program

```

C:\Windows\system32\cmd.exe

C:\Users\User\1 work\web\Firmware\ATL\ATL>EpromCmd src ua BU US010TX_23037-0.
Hex
Ver 1.0.0.19
Found source on port 6
Autodetect platform: Source
Detected SPI serial flash.
Autodetect size: 128k
Hex mode
Burning file US010TX_23037-0.Hex, total lines: 2549
Erasing serial flash....Done.
progress: 99%
Total bytes: 81480. Total time: 102.820000 seconds
Burn succeeded.

Hex mode
Verifying file US010TX_23037-0.Hex, total lines: 2549
progress: 99%
Total bytes: 81480. Total time: 91.854000 seconds
Verification succeeded!!! :->

C:\Users\User\1 work\web\Firmware\ATL\ATL>pause
Press any key to continue . . .
  
```

If the software does not begin when opened, additional steps will be needed -- see page 6

```

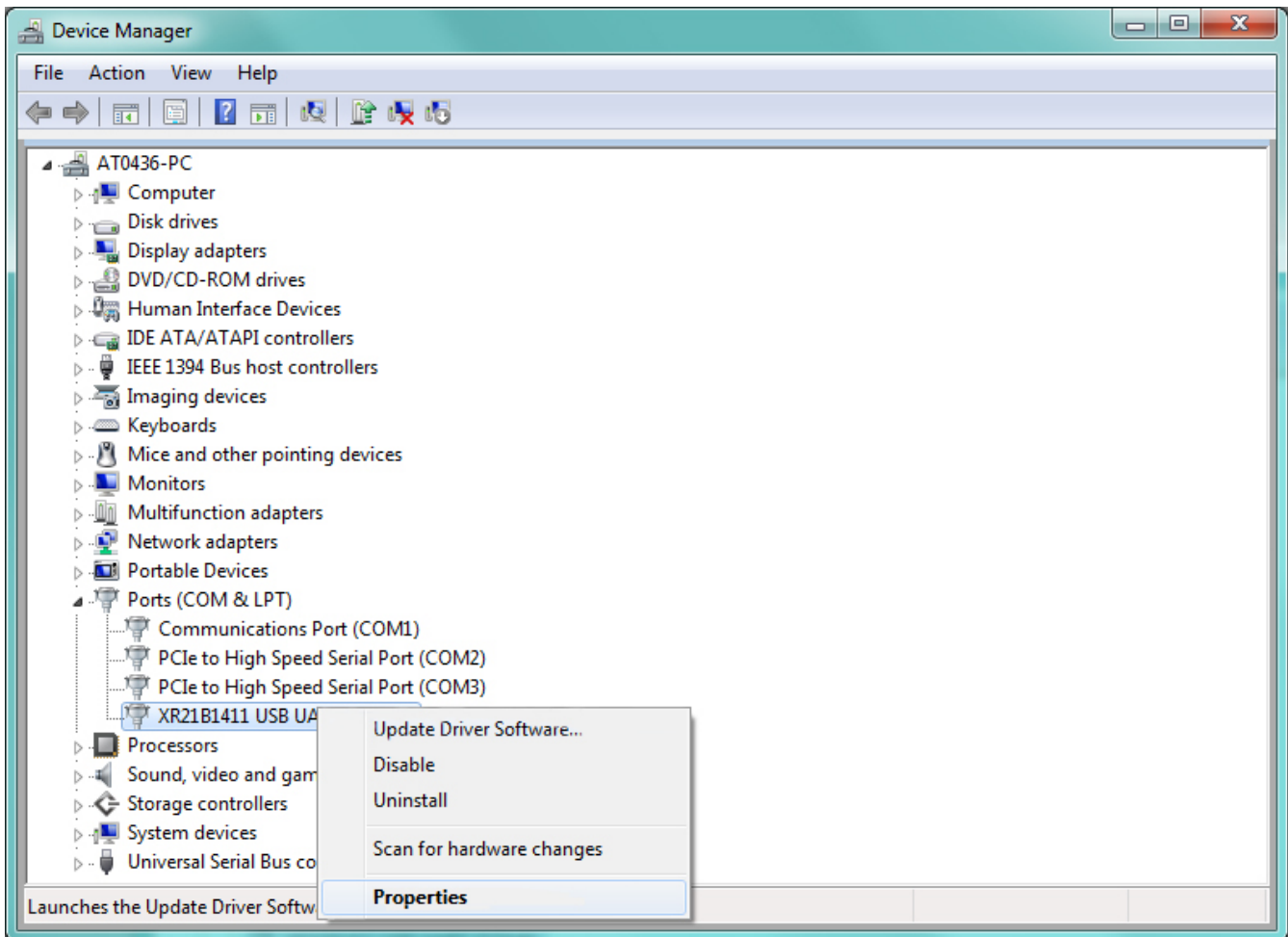
C:\Windows\system32\cmd.exe

Hex
Ver 1.0.0.19
Found sink on port 7
Autodetect platform: full
Warning: Unrecognized flash device type id: 128!!!!!!!!!!!!!!
Hex mode
Burning file US010RX_23037-0.Hex, total lines: 2785
Erasing serial flash....Can't erase unknown device: 0
progress: 0%Warning: Could not negotiate with serial flash. Write: 0, read: 255.
Retrying...
Warning: Could not negotiate with serial flash. Write: 0, read: 255. Retrying...
Warning: Could not negotiate with serial flash. Write: 0, read: 128. Retrying...
Warning: Could not negotiate with serial flash. Write: 0, read: 128. Retrying...
Warning: Could not negotiate with serial flash. Write: 0, read: 255. Retrying...
Warning: Could not negotiate with serial flash. Write: 0, read: 15. Retrying...
Warning: Could not negotiate with serial flash. Write: 0, read: 15. Retrying...
Error: Could not negotiate with serial flash. Please check flash connectivity and
proper strap pins configuration. Write: 0, read: 15

C:\Users\User\1 work\web\Firmware\ATL\ATL>pause
Press any key to continue . . .
  
```

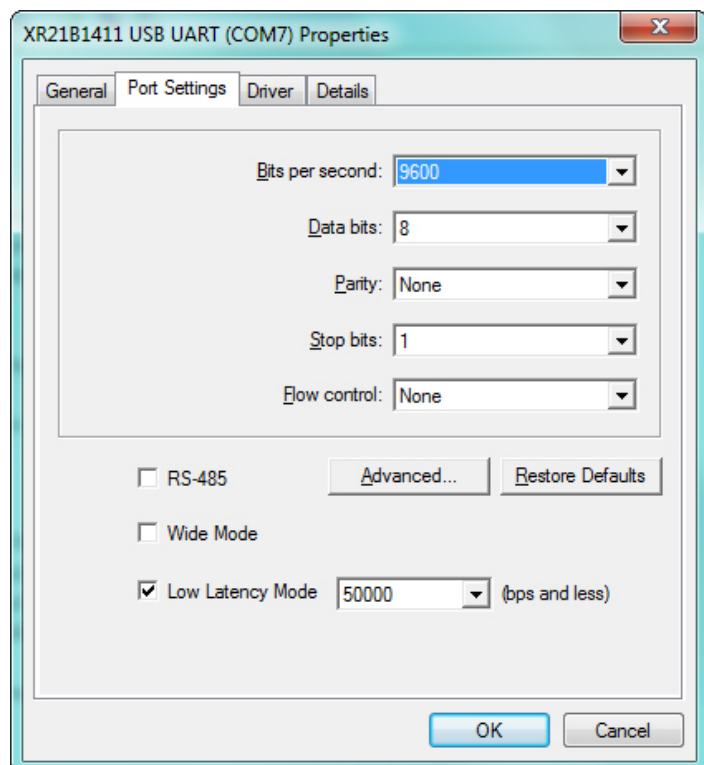
Step 10: Go to the device manager and find COM port "XR21XXXXX"

Step 11: Right click and select "Properties"



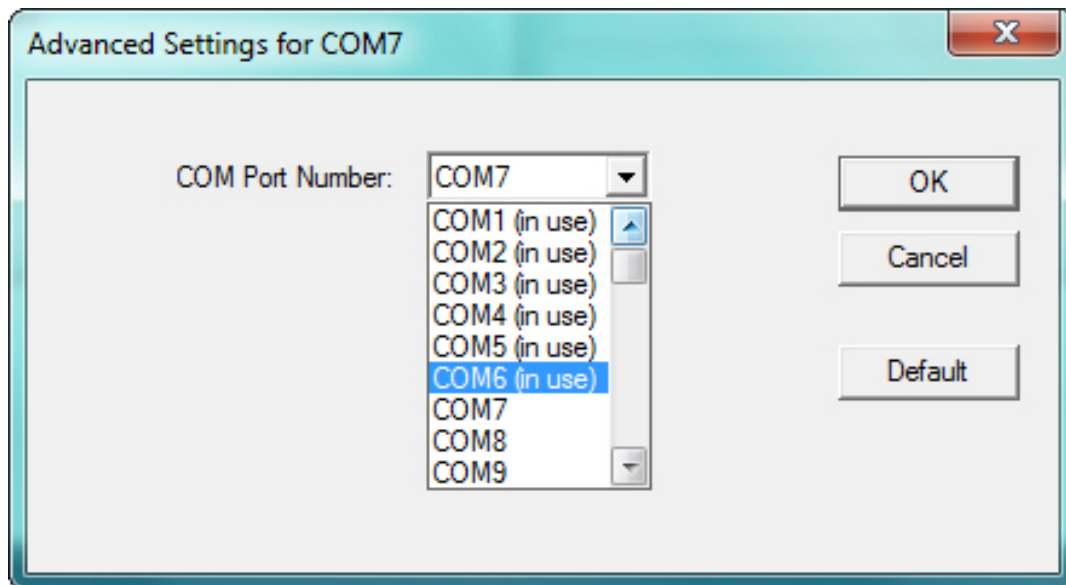
Step 12: Select the "Port Settings" tab

Step 13: Press the "Advanced..." button

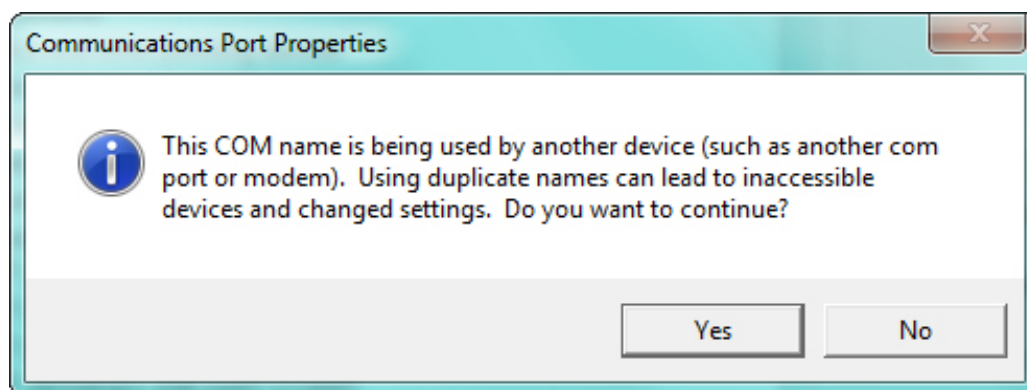


Step 14: Select a different port #

Any port may be selected, including ones already in use (Ex. Port 6)



A warning message will appear if changing to an already used port -- select "Yes"

**Step 15:** Run the update file again, following the instructions for step 9 (pages 4 and 5)

If unsuccessful, change the port again -- Repeat until update is successful